



1
2



Autism: Facts



AUTISM
Awareness

April : Autism Awareness Month



3

4



Get involved



Resources



5

AUTISM: Facts

- Boys are 4 times more likely to have autism than girls
- Autism now affects 1 in 68 children
- Autism is the fastest growing developmental disorder
- Children with autism do progress – early intervention is key
- More than 3.5 million Americans live with an autism spectrum disorder.
- No two people with autism are alike.

Signs To Look For In Children

- Does not say single words by 16 months
- Does not wave, or grasp, by 12 months
- Lack of or delay in spoken language
- Engaging in odd repetitive mannerisms
- Flap their hands, rock their body or spin in circles.
- Little or no eye contact / want to be alone
- Lack of interest in peer relationships
- Lack of make believe play



What is the Autism Spectrum Disorder?

AUTISM SPECTRUM DISORDER IS A CONDITION RELATED TO BRAIN DEVELOPMENT THAT IMPACTS HOW A PERSON PERCEIVES AND SOCIALIZES WITH OTHERS, CAUSING PROBLEMS IN SOCIAL INTERACTION AND COMMUNICATION. THE DISORDER ALSO INCLUDES LIMITED AND REPETITIVE PATTERNS OF BEHAVIOR. THE TERM "SPECTRUM" IN AUTISM SPECTRUM DISORDER REFERS TO THE WIDE RANGE OF SYMPTOMS AND SEVERITY.

Autism spectrum disorder begins in early childhood and eventually causes problems functioning in society — socially, in school and at work, for example. Often children show symptoms of autism within the first year. A small number of children appear to develop normally in the first year, and then go through a period of regression between 18 and 24 months of age when they develop autism symptoms.

(Mayo Clinic, 2018)

APRIL: Autism Awareness Month

Sunday, April 1 - Monday, April 30th

April is Autism Awareness Month, and April 2 is World Autism Day. These observances offer the opportunity to highlight the increasing number of children identified with autism spectrum disorder (ASD) and the substantial burden on families and health, educational and other support services, as well as an opportunity to celebrate the unique perspectives of those living with ASD.

What does the puzzle piece symbol mean?

On a nationwide level, the puzzle piece symbol reflects the mystery and complexity of Autism Spectrum Disorder (ASD). Since every puzzle piece is different in some way, a puzzle piece accurately represents the diversity of the individuals affected.



APRIL IS NATIONAL
AUTISM
AWARENESS
MONTH

Los Angeles - Autism Speaks Walk - April 28th
http://act.autismspeaks.org/site/TR/Walk/SouthernCalifornia?fr_id=3634&pg=entry

Bay Area - Autism Speaks Walk - April 14th
http://act.autismspeaks.org/site/TR/Walk/NorthernCalifornia?fr_id=3633&pg=entry

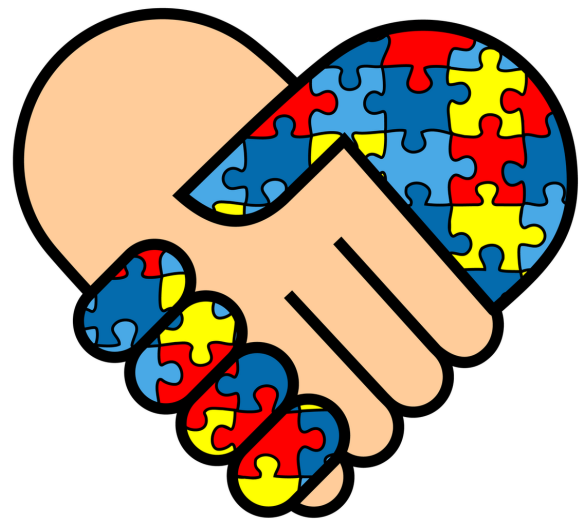
5th Annual Light Up The Blues Concert—An Evening
of Music to Benefit Autism Speaks
<https://www.autismspeaks.org/lightuptheblues>

The Autism Speaks Advocacy Ambassador Program
Have questions? Want to apply? Please email the
advocacy team at advocacy@autismspeaks.org

Wear **BLUE** on April 2, 2017

Join the thousands of people
throughout the world who wear blue
in support of the millions of
individuals and families affected by
Autism Spectrum Disorder (ASD).

Take action to raise autism awareness
in your community!



For More Info:

National Autism Association:

<http://nationalautismassociation.org/resources/autism-fact-sheet/>

Autism Society:

<http://www.autism-society.org/what-is/facts-and-statistics/>

National Autism Resources:

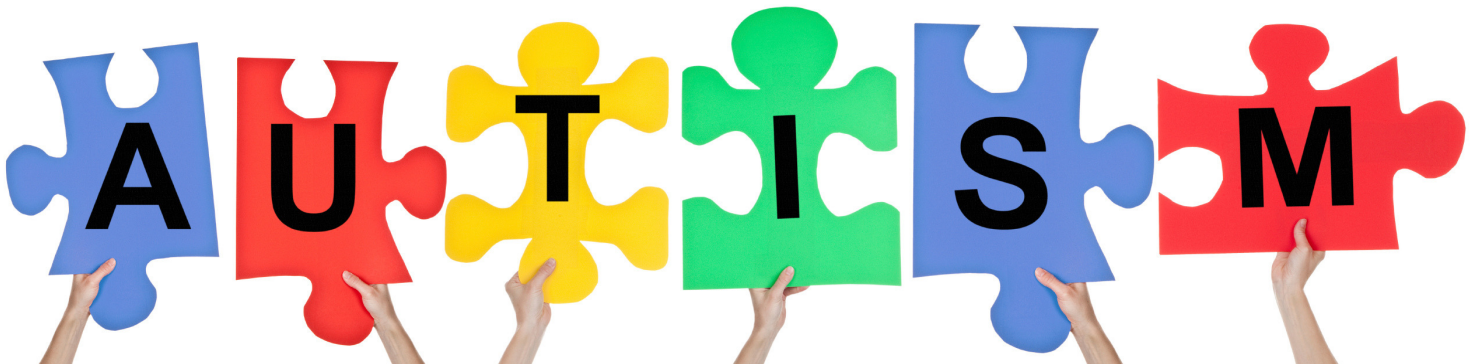
<https://www.nationalautismresources.com>

Autism Speaks:

<https://www.autismspeaks.org>

Autism Research Institute:

<https://www.autism.com>



Resources